

# CENTRAL COURT

ORPINGTON BR6 0JA

Newly refurbished office accommodation in Orpington town centre. Office suites available:

1,059 sq ft | 1,757 sq ft | 2,761 sq ft | 4,062 sq ft | 4,624 sq ft | 7,674 sq ft | 15,348 sq ft | 23,023 sq ft



# DESCRIPTION

Central Court comprises a 67,000 sq ft office building arranged over four floors in a 'U' shape configuration around an attractive garden for sole use of the tenants.

The common parts are undergoing a comprehensive refurbishment to include a remodelled reception with new communal workspaces and breakout areas.

The building benefits from an excellent town centre car parking ratio of 1:448 sq ft.





# ACCOMMODATION

The available accommodation is 23,023 sq ft over second, third and fourth floors in the south block of the building.

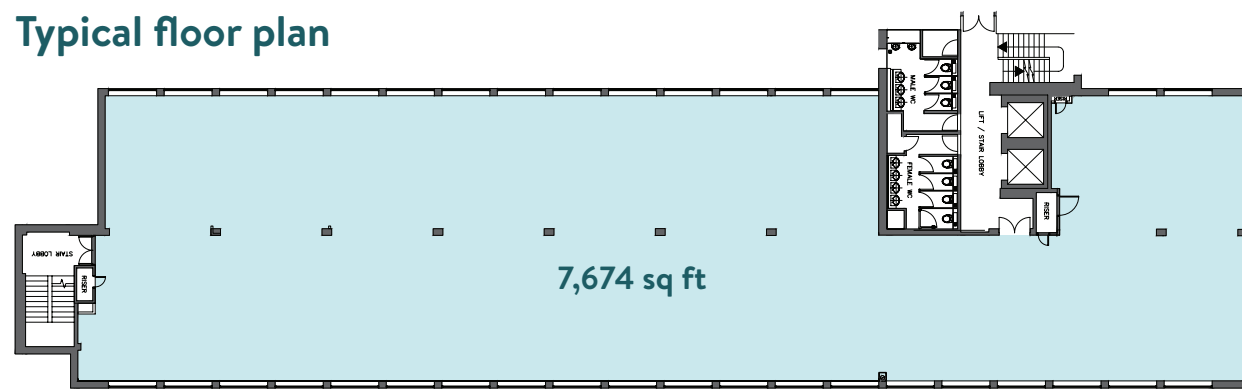
The available office floors offer flexible open plan space with excellent natural light and suites available in a variety of sizes ranging from 1,059 to 23,023 sq ft.

Floor	Area (sq ft NIA)	Area (sq m NIA)
Fourth	7,674	713
Third	7,674	713
Second	7,674	713
<b>Total</b>	<b>23,023</b>	<b>2,139</b>

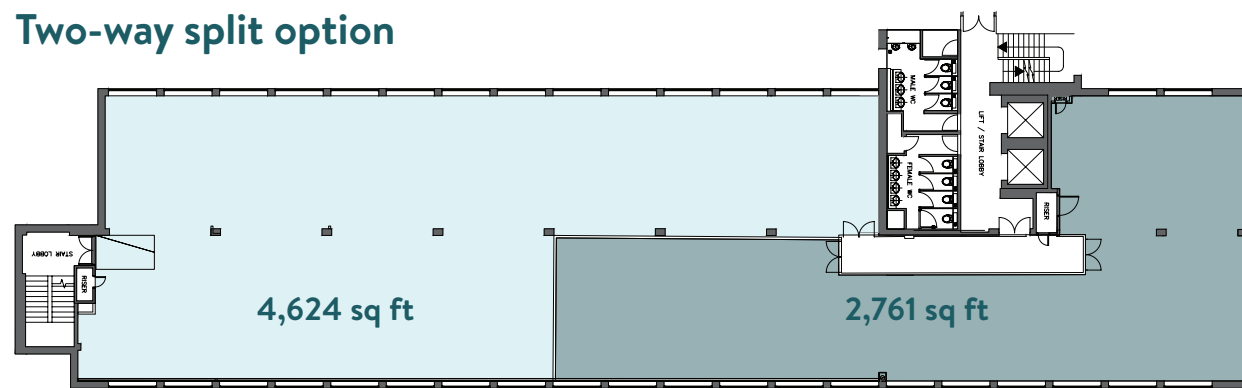
Floor areas to be confirmed



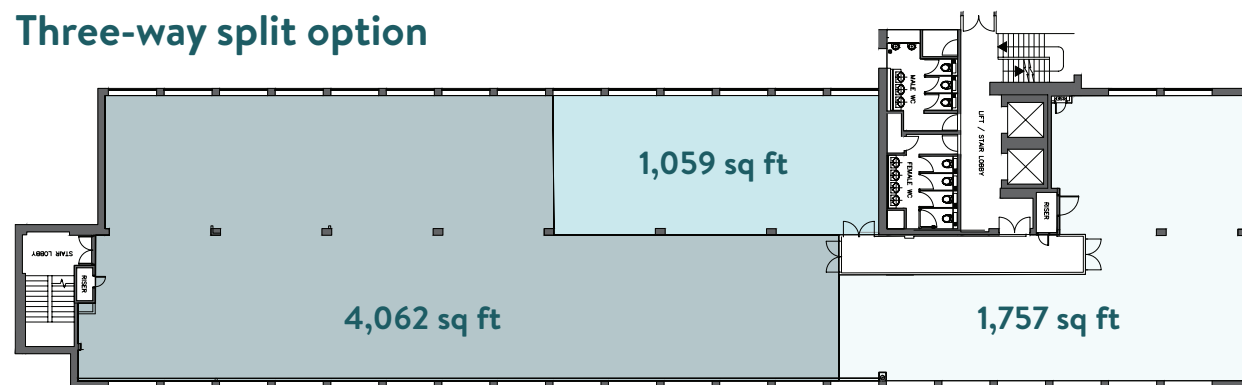
## Typical floor plan



## Two-way split option



## Three-way split option



Not to scale. For indicative purposes only.



- EPC A anticipated (to be obtained)
- Air-conditioning & perimeter heating
- 4 10-person, 800 KG lifts
- Floor to ceiling heights of c.2.6m
- Remodelled reception
- Full access raised floors
- Secure cycle storage provision
- Flexible, easily divisible floorplates
- WCs on all floors & disabled on ground and first
- Recessed lighting LED panels





# LOCATION

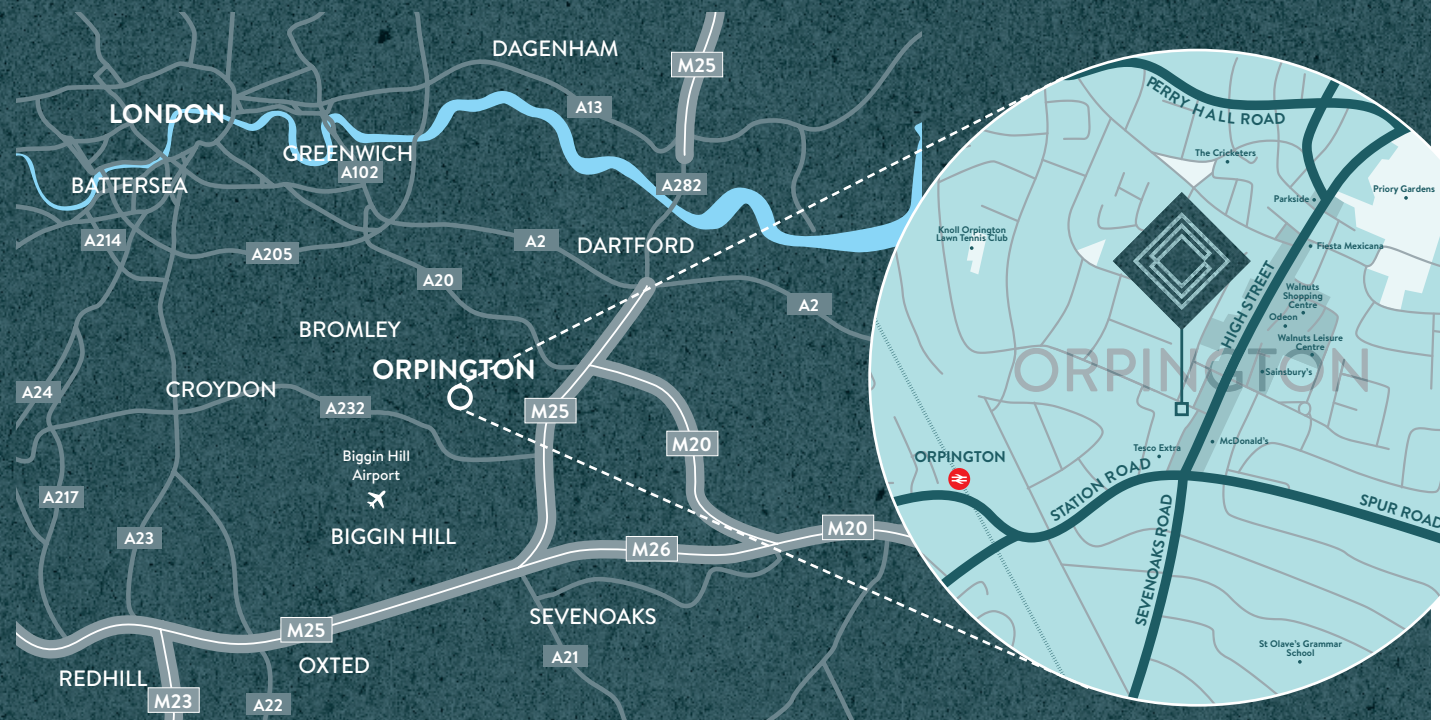
Central Court is prominently located at the heart of Orpington Town Centre. It is situated on Knoll Rise which is directly off the High Street next to its junction with the A232 Spur Road. This leads to Orpington Railway Station and Croydon Town Centre.

The property lies adjacent to Tesco's mixed-use development constructed in 2009 for £43.5 million comprising a Tesco Extra store, 73 apartments, a multi-storey car park and a medical facility.

Orpington is an affluent residential location with expansive public spaces with the benefit of a lively high street offering many retail and leisure amenities which are all within walking distance of the property. High street retailers/restaurants include Pizza Express, Tesco, Boots, WH Smith and Sainsbury's.

The Walnuts Shopping Centre is located within 5 minutes' walk of the property down the High Street. Following its recent purchase by Tikehau Capital and Rob Tincknell's urban regeneration specialist Areli Real Estate, investment into the scheme is expected to act as a catalyst for future regeneration across the Town Centre.

<b>17 mins</b>	<b>21 mins</b>	<b>26 mins</b>	<b>31 mins</b>	<b>39 mins</b>
LONDON BRIDGE	WATERLOO EAST	CHARING CROSS	CANNON STREET	LONDON VICTORIA





# CONTACT

For more information or to organise a viewing,  
please contact the joint agents:

**Andy Tucker**

07721 260 545  
atucker@hanovergreen.co.uk

**Mike Lewis**

07889 361 427  
mike.lewis@michaelrogers.co.uk

**Richard Zoers**

07730 567 607  
rzoers@hanovergreen.co.uk



Disclaimer: Hanover Green & Michael Rogers for themselves and for the vendors or lessors of this property whose agents they are give notice that: (i) the particulars are set out as a general outline only for the guidance of intending purchasers or lessees and do not constitute part of an offer or a contract, (ii) all descriptions, dimensions, references to condition and necessary permissions for use and occupation, and other details are given in good faith and are believed to be correct but any intending purchasers or tenants should not rely on them as statements or representations of fact but satisfy themselves by inspection or otherwise as to the correctness of the property, (iii) no person in the employment of Hanover Green & Michael Rogers has the authority to make or give any representation or warranty whatever in relation to the property. Designed by [www.take-shape.co.uk](http://www.take-shape.co.uk). June 2024.