



Grosvenor House

London Road, Redhill, Surrey, RH1 1LQ



Situated in the heart of Redhill, with the Surrey Hills right on your doorstep. Grosvenor house is in one of the most sought-after commuter towns. Benefitting from unbeatable transport, a vibrant shopping centre, and a number of restaurants and coffee shops just a short stroll away.







A superb office refurbishment throughout

Grosvenor House provides a range of state-of-the-art amenities tailored to the needs of your business



24/7 Access



Two 13 person Lift Access



Secure Cycle Storage Facility



VRV Air conditioning



Central Location



Air-Conditioning



Building Manager



Parking



Refurbished WC's



Showers

EPC

Rating C-56



LED Lighting



Fitted Space with Kitchenette



Full access raised floors

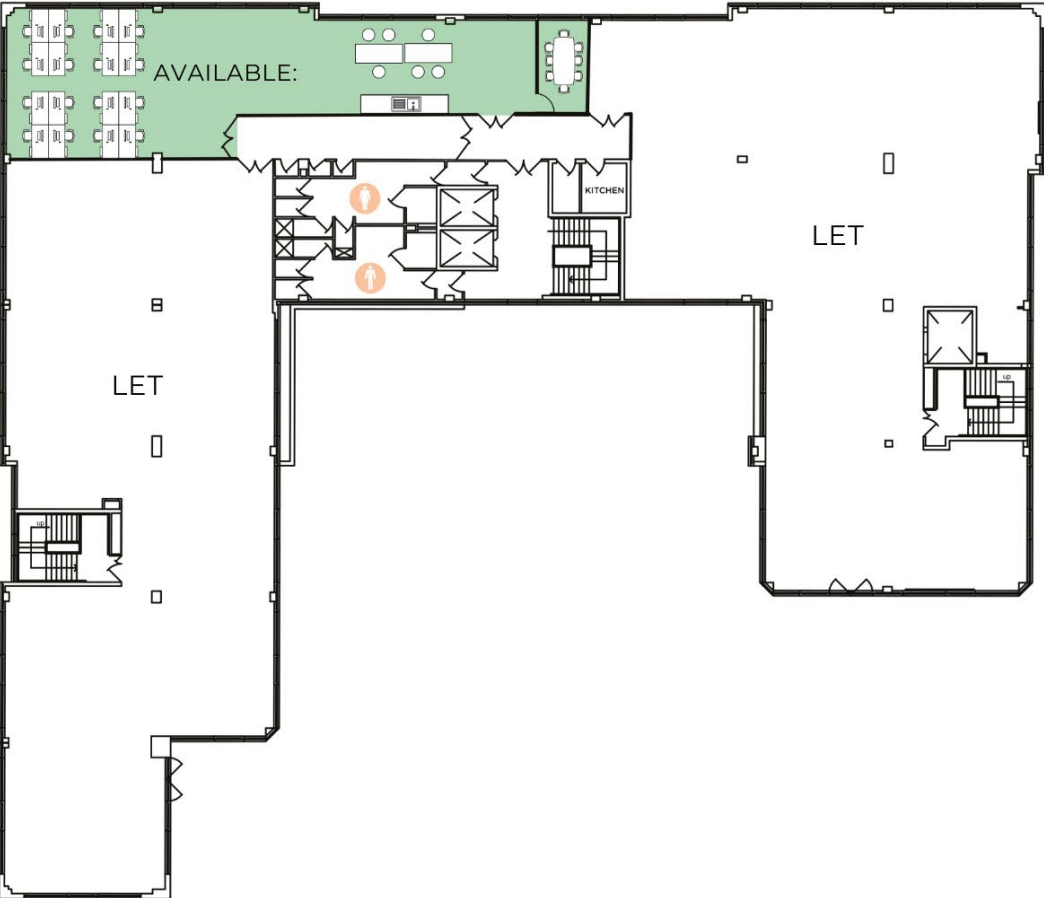


Furniture Available

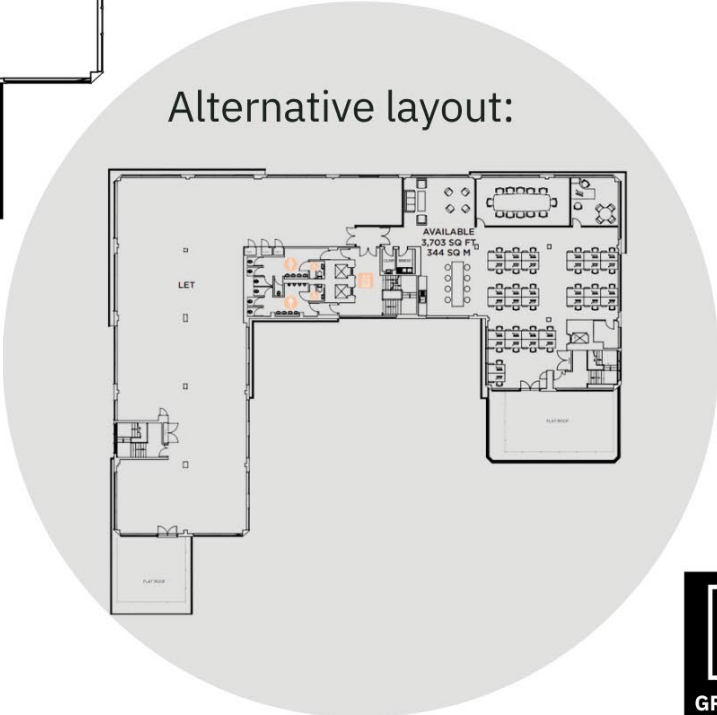
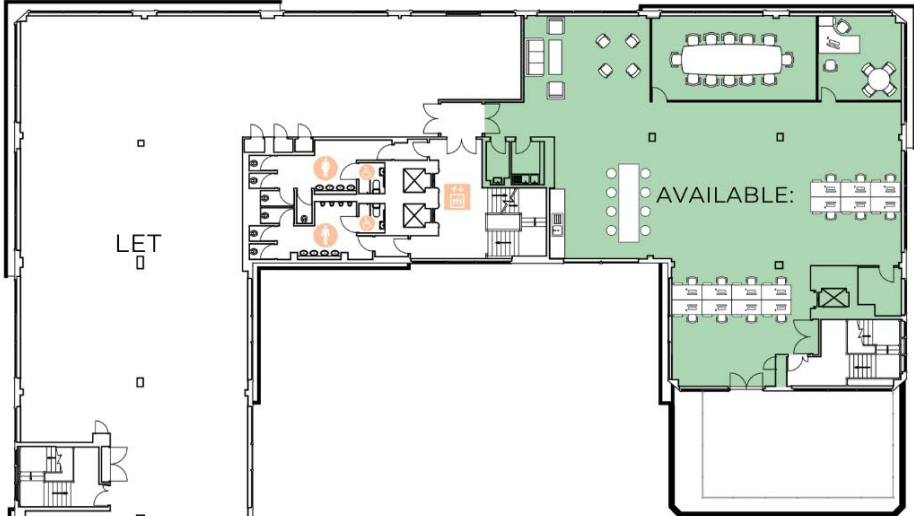


Available Space

Second Floor:
1,835 SQ. FT. 171 SQ. M.

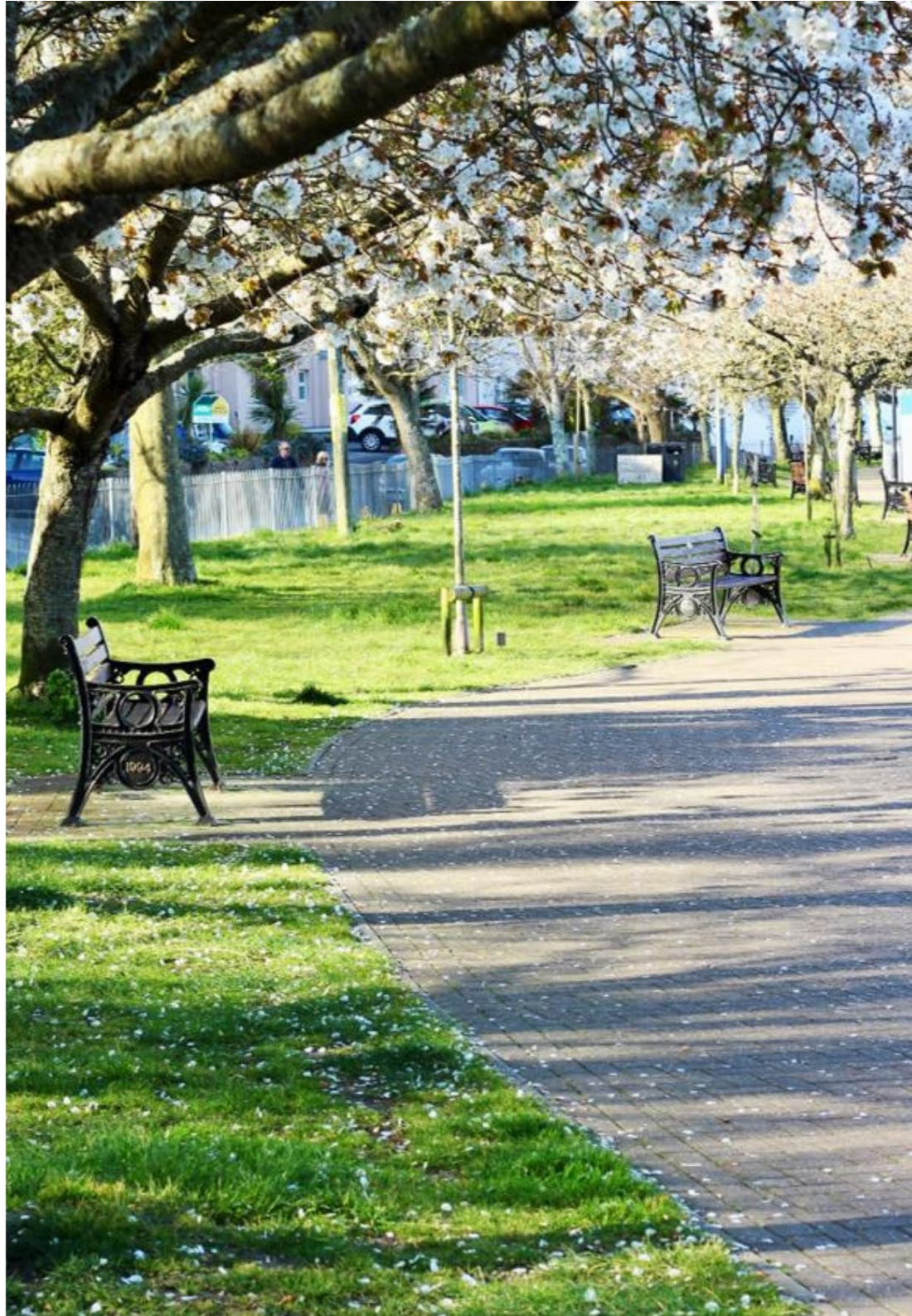


Third Floor:
3,703 SQ. FT. 344 SQ. M.



Working in Redhill

Overlooking the newly transformed Memorial Park, Grosvenor House places you within walking distance of essential amenities, including the mainline station and The Belfry Shopping Centre. With Redhill situated only 31 minutes from Central London and only 8 mins to Gatwick Airport, your business is well-connected. Quick access to the M25 and M23 ensures seamless travel!





Local Area



10 minute walk to the high street with an array of amenities



Travelodge Redhill Town Centre - **3 minutes**

The Sun Pub & Eatery - **5 minutes**

Redhill Market - **6 minutes**

The Junction Pub & Eatery - **6 minutes**

KOKORO Redhill - **7 minutes**

Bellfry Centre with over 40 shops - **7 minutes**

Posadero Lounge - **8 minutes**

The Light Cinema - **8 minutes**

The Gym Group - **8 minutes**

Everest Spice - **10 minutes**

Home Cottage Pub & Eatery - **11 minutes**



Perfectly Placed for Businesses



One of the UKs most popular commuter towns



Travel Times By Rail

5 minute walk to Redhill Station

	Duration	Trains Per Hour
Crawley	7 mins	5
Gatwick Airport	7 mins	5
East Croydon	11 mins	7
Three Bridges	13 mins	6
Clapham Junction	22 mins	6
London Victoria	30 mins	6

Distances by Road

	Distance
Redhill Mainline Station	300 meters
M25 J8	2 miles
Gatwick Airport	7 miles
Crawley	11 miles
Croydon	11 miles
Central London	20 miles
Heathrow Airport	28 miles





Grosvenor House

Redhill | Surrey

Orbit
Southern

020 8750 1410

www.orbitsouthern.co.uk



DISCLAIMER: Whilst the statements contained in these particulars are given in good faith and as a general guide to the property, they do not form any part of an offer or contract. Neither the Lessor or their Agents can accept responsibility for them. Interested parties must satisfy themselves by inspection, or otherwise, as to the correctness of these particulars. Orbit Developments (Southern) Limited Co. No. 2108532. Registered in England and Wales. (0125)